



The Economic & Community Benefits of Tribes in Washington



MAY 2022

Executive Summary

Tribes in Washington are making significant investments in the state's quality of life.

Growing tribal economies fund schools, housing programs, health clinics, environmental rehabilitation, infrastructure development, firefighting, law enforcement, and other public services for Indians and non-Indians alike. Even though COVID-19 brought rapid closures to casinos and other fiscally critical tribal enterprises, tribal governments have been at the vanguard of Washington's pandemic response.

The economic analysis summarized on the right shows tribes are large employers, fiscally independent governments, and contributors to the public good in Washington. Were it not for COVID-19, tribes would be an even greater presence, and tribal resilience promises a complete recovery when it becomes possible.

The stories highlighted throughout show tribes are creative and committed innovators in government and effective during a crisis. Washingtonians benefit directly from tribal actions and initiatives. Tribal governments vaccinate teachers and first responders, open community centers to neighbors, fund off-reservation schools, maintain public safety, and collaborate with state and local governments on everything from road construction to salmon habitat restoration.

If tribes were out-of-state corporations bringing this economic activity and public-spiritedness to Washington, legislators would likely offer tax waivers or reductions. And, rooted as they are in the lands and waters of Washington, tribes will never threaten to take operations or profits out of the state. Washington has substantially benefited from the economic and social resurgence in Indian Country and will for years to come.

Strong Tribal Economies Benefit All Washingtonians

Washington's 29 tribal governments generate:

Economic Activity

\$6.6 billion
in gross state product

\$1.5 billion
in wages and benefits

\$1.2 billion
in state and local taxes

\$2.8 billion
in purchasing power

\$4 out of \$5
of tribal revenue are
from sovereignty

100%
of tribal enterprise profits
are government revenue

Jobs

37,371
direct employment

54,000
jobs trace back to tribes

72%
non-Indian employees

1 in 86
Washington jobs

Table of Contents

4 Tribal Governments Produce Economic and Community Benefits

- 5 Indian tribes are governments
 - 8 Tribal enterprises produce in-state government revenue
 - 9 Washington and tribal governments solve problems together
-

10 Stronger Tribal Economies Benefit All Washingtonians

- 12 Tribes are top Washington employers
 - 13 Tribes account for \$6.6 billion of gross state product
 - 15 Tribal contributions under gaming compacts
-

17 Washington Tribes and COVID-19

- 17 Caring for communities
-

18 Indian Needs Remain Acute

- 18 Reservation socioeconomic status lags Washington's
 - 19 Federal underfunding of Indian programs continues
 - 20 Tribes are stepping into the breach
-

21 Tribes Strengthen Washington's Economy

- 21 Indian economic development helps poor regions of Washington
 - 21 Intertribal transfers boost rural economies
 - 22 Tribes are more fiscally independent
-

23 Conclusion

- 23 Tribes benefit all Washingtonians
-

24 Appendices

- 24 About the author
- 24 Conservatism in modeling and reporting impacts
- 24 Additional information
- 25 References

Tribal Governments Produce Economic and Community Benefits

Popular belief is that the U.S. gave casinos, fishing privileges, and other rights to Indians to address Indian poverty or make up for past wrongs. That is false, and the true nature of tribes matters for their economic impact today. This section addresses this misconception by providing facts about three critical features of tribes.

First, tribes retain powers and authorities of self-government. Second, tribal governments own most of the economic activity on Washington's Indian reservations, and 100 percent of tribal enterprise income is government revenue intended to serve their communities. Third, tribes routinely collaborate with Washington's state, county, and municipal governments. All three features amplify tribal economic impacts.



Tribal government revenue pays for public goods and services like public safety and law enforcement.



► Improving Lives

KALISPEL CAMAS CENTER

The Kalispel Tribe of Indians' Camas Center for Community Wellness supports the health and social needs of its citizens and the greater community. The Center offers medical, chiropractic, dental, and behavioral health services for people in Pend Oreille County. In addition, the Camas Early Learning Center (inside the facility) focuses on individual child development by incorporating social-emotional learning and culturally responsive activities for young children. Tribes invest in the communities they have called home since time immemorial. The Camas Center is a testament to the Kalispel Tribe's commitment to the greater community.



Indian tribes are governments

Tribes have always governed themselves, and they participate in American federalism with powers they retain from before European settlement. Accordingly, the U.S. Constitution explicitly acknowledges four sovereigns: the federal government, state governments, foreign nations, and Indian tribes. Today, treaties and U.S. law give shape to tribal powers. Still, more than anything, self-determination and self-reliance are the order of the day in Indian Country. Fundamentally, Indian tribes *do not* exist because the U.S. granted Indians powers based on ethnicity or race; they exist as political entities.

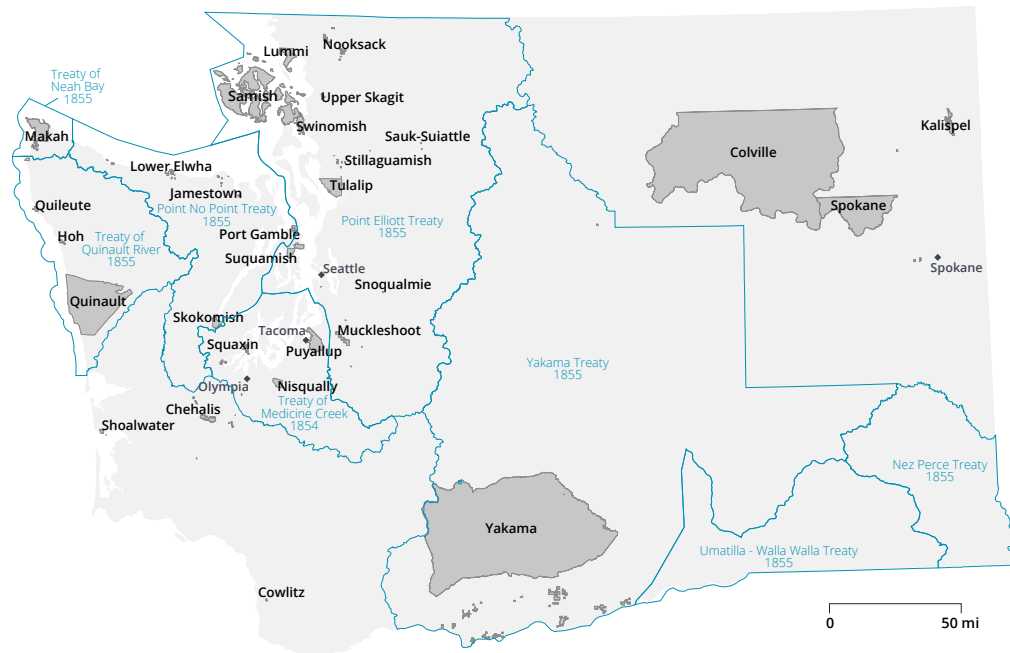
Today 574 tribal governments operate in the U.S., 29 of them in what is now Washington state (see Figure 1).

Elected tribal officials legislate and execute tribal laws, and governmental departments produce public goods, services, and amenities. Consistent with federalism, tribes cooperate with some of the 1,900 other governments in Washington; that is, with state, county, municipal, school district, and special district governments (U.S. Census, 2018).

Tribal governments provide healthcare, protect and restore habitats, support and educate children, build infrastructure, protect public safety, care for elders, preserve and honor culture, and develop economies.

FIGURE 1

Indian Country in Washington



* Presentation of treaty and tribal boundaries as reported by the United States and others does not imply the Washington tribes' acceptance and/or endorsement of the boundaries or the processes that produced them. Shaded regions are reservations with the exception of Samish, which is a tribally designated statistical area (TDSA).

Self-government is critical to American Indian and Alaska Native well-being. After more than a century and a half of federal experimentation, we've learned that recognizing and supporting tribal self-determination, self-government, and self-reliance is what changes Indian life for the better (Kalt, 1996). Prior policies fractionalized land bases, isolated Indians, stripped culture and language, and restricted tribal revenue collection. Self-determination, however, puts decision-making in the right hands and results in business success, enhanced

healthcare, better housing, more effective law enforcement, improved natural resource management, and more (Dixon et al., 1998; Krepps & Caves, 1994; Wakeling et al., 2000; Taylor et al., 1999; Champagne & Goldberg, 2012; Chandler & Lalonde, 1998; Berry, 2009).

Nationwide, Indian reservations have experienced remarkable economic growth (Taylor & Kalt, 2005; Akee et al., 2014). Washington reservations are no exception. Over the last 30

years, Indians on Washington reservations saw their inflation-adjusted incomes rise 46 percent and unemployment fall 31 percent. Meanwhile, the proportion of Indian adults with college degrees living on reservations increased by 65 percent. These and related improvements are beginning to reverse decades of poverty and dependence (see Figure 2). More importantly, successful investments in poor communities' human capital yield double dividends: they reduce dependency—on families, tribes, or taxpayers—and increase lifetime productivity.

FIGURE 2

Three Decades of Change on WA Reservations

Successful investments in poor communities' human capital yield double dividends: they reduce dependency—on families, tribes, or taxpayers—and increase lifetime productivity.

1990–2020: Percent Change for American Indians on Washington Reservations (U.S. Census)

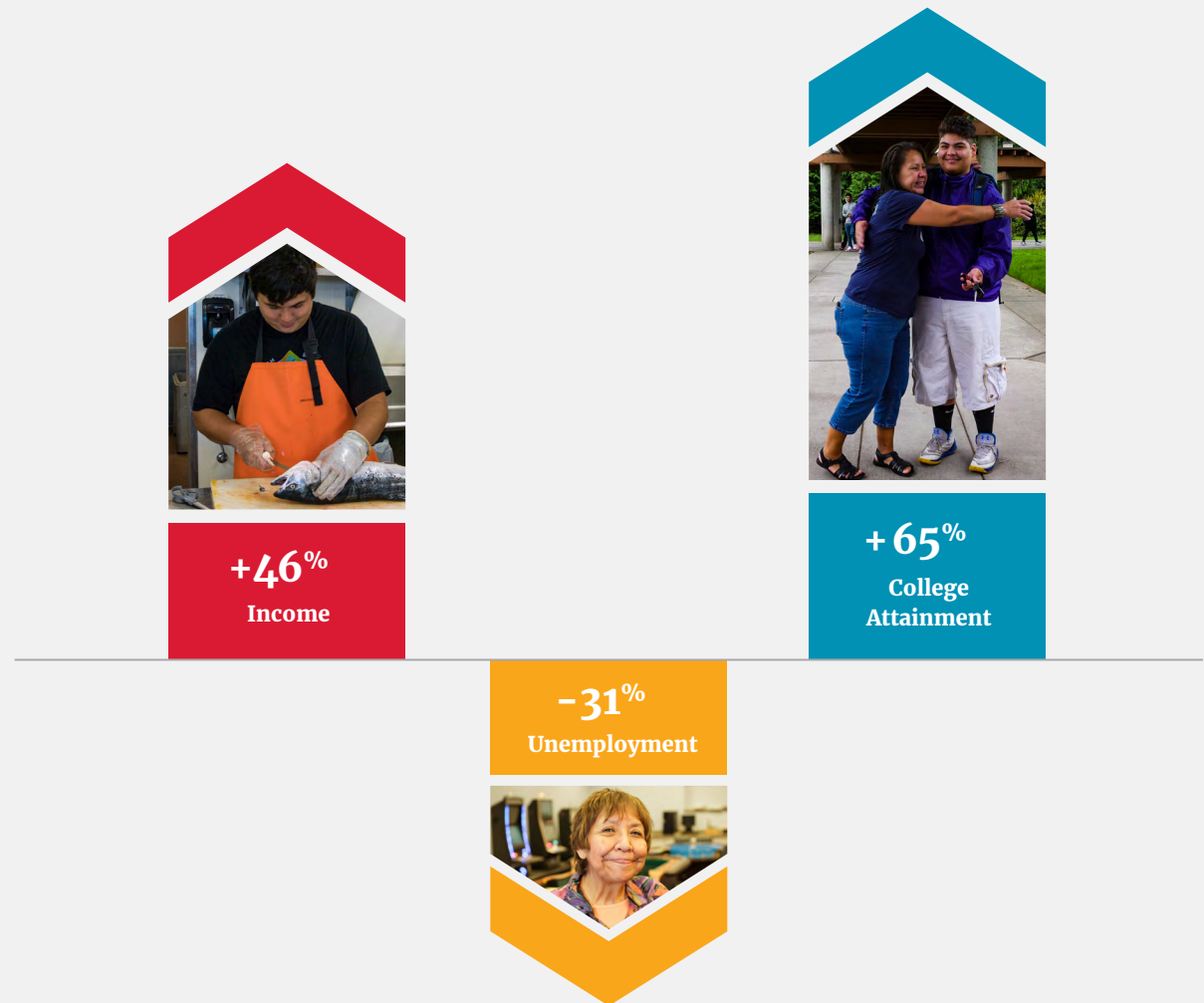


FIGURE 3

Milestones of Tribe-State Relations in Washington



Tribal enterprises produce in-state government revenue

Tribal governments face unique challenges to their taxation powers (Fletcher, 2004; Croman & Taylor, 2016). Instead of relying on taxes to fund essential services, tribes rely on revenue generated by their government-owned enterprises. The gross reservation product of tribal economies is dominated by government-owned businesses such as Yakama Nation Land Enterprise, Salish Seafoods, Kalispel Market Chevron, and The Cedars at Dungeness Golf Course.

Virtually 100 percent of Indian enterprise income is revenue to governments in Washington—in-state owners who will not threaten to take operations or revenues out of state.

Tribal businesses offer more benefits to local and state economies than private enterprises. This is because tribal businesses transfer their earnings to tribal governments.



Revenue from tribal government enterprises—from casinos to lumber mills—is in-state revenue that benefits Indians and non-Indians alike.

► Building Community

SHOALWATER BAY TRIBE - TSUNAMI TOWER

Washington has dozens of coastal communities that are vulnerable to tsunamis, but until recently there were only two tsunami escape towers in the entire state. In 2021, the Shoalwater Bay Tribe partnered with Washington's Emergency Management Division and FEMA Region 10 to construct the state's third tsunami evacuation tower. The successful collaboration inspired the funding and construction of additional towers in the nearby towns of Ocean Shores and Westport.



Construction of the Shoalwater Bay Tribe's Tsunami Tower is expected to be complete in the summer of 2022.



Washington and tribal governments solve problems together

Washington state and the 29 federally recognized tribes within its borders routinely work together. The broadest formal framework for such collaboration arises from the 1989 Centennial Accord. It pledges the signatory tribes and Washington to recognize each other's sovereignty and "translate the government-to-government relationship into more efficient, improved and beneficial services to American Indian and non-Indian people."

Refreshed by a Millennium Agreement (1999) and bolstered by state law (RCW 43.376), the Centennial Accord framework strengthens state-tribe cooperation and respect at the state agency level. Recent collaborations include:

- Creating a missing and murdered indigenous women task force (Attorney General),
- Surveying and controlling invasive species (Agriculture),
- Repatriating Native American human remains (Archaeology and Historic Preservation),
- Supporting micro-grid development to make electricity more secure (Commerce),
- Rehabilitating stream flows and habitat for salmon (Ecology, Conservation Commission),
- Preparing "a resource directory for American Indians...to provide continuity of care for [the] health and behavioral health service[s]...and better prepare individuals for reentry to the community" (Corrections), and
- Implementing "a voluntary visiting home program that provides specific supports and resources to parents who have newborns" (Children, Youth, and Families) (Bill, 2021).

These and myriad other partnerships help make Washington a better place for Indians and non-Indians.

American Indian self-government is the best means of turning reservations in Washington into vibrant communities. Tribes' governmental nature means that in-state enterprise income addresses in-state problems vastly more than private profits would. Tribes' growing participation in U.S. federalism, from the White House to the local sewage treatment system, means that non-Indians also benefit from increasing Indian success as well. All three features intensify tribal economic impacts. The rest of this report shows how.



Washington and tribal governments work together to solve problems like restoring salmon habitat.

Stronger Tribal Economies Benefit All Washingtonians

In contrast to the 1960s, when Indian tribes might have been considered an economic afterthought, today, Indian tribes rank among the Washington economy's biggest influences. Economic data shared by 23 of the 29 federally recognized tribes of Washington demonstrate their high-ranking employment, large GDP contribution, and fiscal benefit. The participants represent urban and rural tribes, eastern and western tribes, and small and large tribes. The survey data captures the overwhelming majority (89 percent) of the casino capacity of the Indian gaming sector in Washington (Casino City, 2021).



Collectively, the 23 tribes shared data for 198 enterprises operating in 2019 and 2020, 32 of which were casinos or casino hotels. Tribes have been explicit about the need to diversify their economies, and Washington tribes continue to succeed on this goal. The 166 non-gaming companies operate in sectors as wide-ranging as convenience stores, restaurants, construction companies, and a whiskey distillery.



Tribal-owned businesses directly employ 37,000 Washingtonians and are responsible for more than 54,000 jobs throughout the state.

► Protecting Resources

QUILLAYUTE RIVER RESTORATION

The Quileute Tribe is working to restore the Quillayute River to protect its lands. Climate change has brought more flooding to the area. Without intervention, the river threatens to change course and wipe out the village of La Push and most of the lower reservation. The Quileute's restoration efforts rely on green infrastructure techniques where the tribe introduces engineered logjams to help trap sediment and create cold-water pools for adult fish to spawn and young fry to hide. Logjams also slow the river's flow, allowing the groundwater to recharge. These efforts not only protect the environment but may also protect people's lives.





Federally Recognized Tribes in Washington

Survey participants in bold

Confederated Tribes and Bands of the Yakama Nation

Confederated Tribes of the Chehalis Reservation

Confederated Tribes of the Colville Reservation

Cowlitz Indian Tribe

Hoh Indian Tribe

Jamestown S'Klallam Tribe

Kalispel Indian Community of the Kalispel Reservation

Lower Elwha Tribal Community

Lummi Tribe of the Lummi Reservation

Makah Indian Tribe of the Makah Indian Reservation

Muckleshoot Indian Tribe

Nisqually Indian Tribe

Nooksack Indian Tribe

Port Gamble S'Klallam Tribe

Puyallup Tribe of the Puyallup Reservation

Quileute Reservation

Quinault Indian Nation

Samish Indian Nation

Sauk-Suiattle Indian Tribe

Shoalwater Bay Indian Tribe of the Shoalwater Bay Indian Reservation

Skokomish Indian Tribe

Snoqualmie Indian Tribe

Spokane Tribe of the Spokane Reservation

Squaxin Island Tribe of the Squaxin Island Reservation

Stillaguamish Tribe of Indians of Washington

Suquamish Indian Tribe of the Port Madison Reservation

Swinomish Indian Tribal Community

Tulalip Tribes of Washington

Upper Skagit Indian Tribe

Tribes are top Washington employers

The governments and businesses of these 23 tribes employed more than 27,493 Washingtonians at year's end in 2019 and 24,280 in 2020.

Across government, casinos, and non-casino businesses, seven in ten of these employees were non-Indians. Enterprise employment skews even more toward non-Indian workers (see Figure 4). Publicly available information on total tribal employment in Washington indicates another 9,878 jobs are unaccounted for—that is, it shows that total tribal employment in 2019 was 37,371. (Henson et al., 2021). Regardless of the source, collectively, Washington tribes rank seventh in the state (see Figure 5), above Walmart (22,103) and Costco (20,183) and below Providence Health (43,496), according to the Puget Sound Business Journal's ranking of regional employers (Puget Sound Business Journal, 2021).

As noted above, tribes are not private employers, so to contextualize tribal employment another way, it was about as large as the 2020 *combined* employment of the top four departments of Washington state government (outside higher education): Social & Health Service (16,257), Corrections (8,951), Transportation (6,759), and Child, Youth, and Families (4,591) (Management, 2021).

It is important to note that the survey data *understates* the size and impact of the Indian economy in Washington. First, six tribes did not respond to the survey. Second, some responding tribes did not report all their economic activity.

Collectively, Washington tribes rank seventh in the state for number of employees—more than Walmart or Costco.

Third, businesses owned by individual Indians operate on and off the reservations, and their jobs and revenues are generally unknown to tribal governments. Fourth, on-reservation businesses owned by non-Indians also contribute to the gross reservation product but do not typically report economic data to tribal governments. Thus, the size of the Indian economy in Washington is larger still than these employment comparisons indicate.

FIGURE 5
Top 15 Employers in Washington
In-state employees, 2019

1	80,000	Amazon.com
2	57,666	Microsoft
3	56,908	Boeing
4	54,000	Joint Base Lewis-McChord
5	49,526	University of Washington Seattle
6	43,496	Providence
	37,371	Washington Tribes*
7	22,103	Walmart
8	20,183	Costco Wholesale
9	20,000	Albertsons & Safeway
10	18,288	MultiCare Health System
11	17,762	Virginia Mason Franciscan Health
12	16,441	King County Government
13	16,144	Fred Meyer Stores
14	14,000	Starbucks
15	12,651	Swedish Health Services

* Survey respondents only.

FIGURE 4
Washington Tribes' Non-Indian & Indian Employment

Survey responses only

	2019				2020			
	INDIAN	NON-INDIAN	TOTAL	% NON-INDIAN	INDIAN	NON-INDIAN	TOTAL	% NON-INDIAN
ENTERPRISE	1,163	2,443	3,606	68%	1,092	2,206	2,398	67%
GAMING	2,837	13,898	16,735	83%	2,602	11,589	14,191	82%
GOVERNMENT	4,377	2,775	7,152	39%	4,101	2,690	6,791	40%
TOTAL	8,378	19,115	27,493	70%	7,795	16,485	24,280	68%

(WIGA, 2021)



Tribes account for \$6.6 billion of gross state product

Tribes hire and buy in the non-Indian economy. In the pre-pandemic economy, 72 percent of the 27,904 employees were non-Indian. And it is reasonable to expect tribes to make most of their purchases from off-reservation vendors (Taylor, 2006). In 2019 and 2020, the responding tribes paid more than \$1.5 billion and \$1.3 billion, respectively, in employee compensation (including employer contributions to payroll taxes and benefits). Their businesses and governments purchased more than \$2.8 billion and \$2.5 billion in goods and services in those years, respectively. The responding tribes spent an additional \$392.8 million and \$332.5 million in 2019 and 2020 on fixed assets, including constructing schools, purchasing emergency response vehicles, and upgrading infrastructure. Such capital investments support the future growth of the Washington economy.

Tribal purchasing—the *direct* economic effect—yields *indirect* effects as the supplying firms themselves purchase inputs and hire workers. When tribes purchase telephones, cleaning supplies, asphalt, fire trucks, water-testing kits, schoolbooks, accounting services, and the like, their suppliers purchase goods and services and hire employees—

the sum of which is the *indirect* effect. Then, as the employees of both the tribes and their suppliers buy groceries, natural gas, shoes, and washing machines, their household spending generates the *induced* effect. The direct, indirect, and induced together make up the total economic impact (see Figure 7, on the following page).

Total tribal economic activity in the businesses and governments of the survey respondents accounted for \$6.6 billion in gross state product in 2019 and \$5.6 billion in 2020.

Tribes were responsible for 54,000 and 47,500 jobs statewide in those years, respectively. COVID-19 certainly had a disruptive effect on tribal economies (see Figure 6). Still, with solid leadership and planning, a dedicated workforce, caring communities, and a history of resilience, tribal economies are well-positioned to return to their pre-COVID-19 strength soon.



► Building Community

CHEHALIS TRIBE GRAND MOUND DEVELOPMENT

Over the last two decades, the Chehalis Tribe has transformed the Grand Mound community in Thurston County into a hub of economic activity by expanding its tribal enterprises beyond gaming. In 2009, the tribe’s partnership with Great Wolf Resorts began to bring hundreds of thousands of visitors to the area each year, and development soon followed elsewhere in the community. The tribe has primed the area for development with water, sewer, and other infrastructure, and purchased additional parcels nearby for a hotel, distillery, and restaurant. Other developers are building complementary services such as gas stations and fast-food restaurants. The tribe and county hope this mixed commercial space will attract development as the area grows into a great place to work, live, and play.

FIGURE 6

Impact on the Washington State Economy

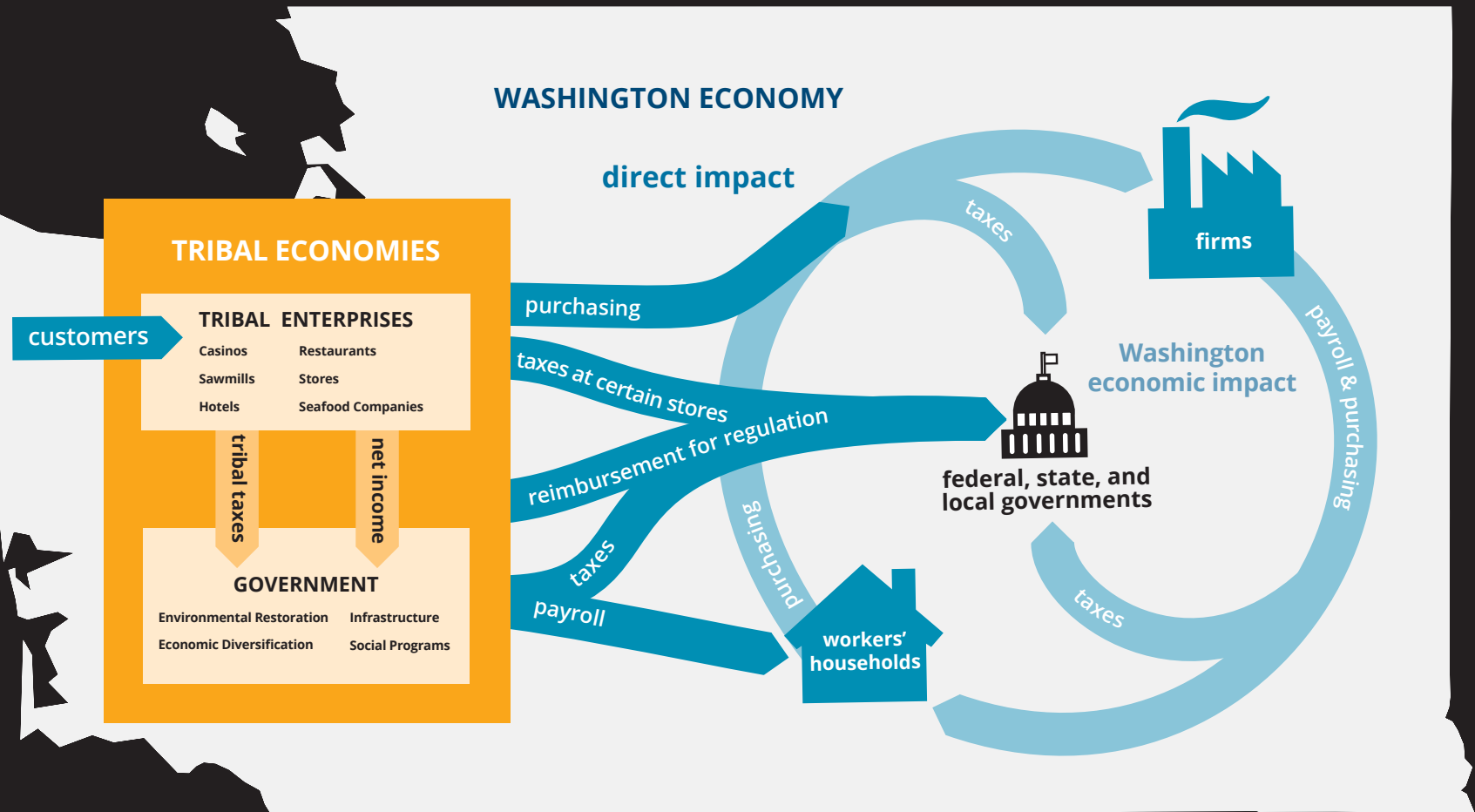
2020 dollars in millions

	2019				2020			
	JOBS	LABOR INCOME	TAXES*	VALUE ADDED	JOBS	LABOR INCOME	TAXES*	VALUE ADDED
ANNUALLY RECURRING	50,199	\$3,358	\$1,111	\$6,192	43,849	\$2,939	\$971	\$5,282
CONSTRUCTION	3,980	\$292	\$90	\$380	3,659	\$267	\$82	\$347
TOTAL	54,179	\$3,650	\$1,201	\$6,572	47,499	\$3,206	\$1,053	\$5,629

* Federal, state, and local taxes on production and imports; does not include social insurance or income taxes. (IMPLAN, 2021)

FIGURE 7

The Economic and Fiscal Flows of Washington Indian Tribes



Tribal contributions under gaming compacts

As is usually the case, the bulk of value-added (or the gross state product, or GSP) is labor income. Another significant fraction of GSP goes to the federal, state, and local governments as taxes. Even though tribal governments do not pay taxes to other governments, tribes *do* generate tax impacts. The indirect and induced economic impacts yield taxable activities in the economy—\$1.2 billion in 2019 and \$1.1 billion in 2020—the bulk of which accrued to Washington state and local governments. As noted above, these fiscal effects are understated. And on top of these indirect and induced tax effects, tribes make direct contributions to the governments of Washington.

Under the federal Indian Gaming Regulatory Act of 1988, the tribes and the state of Washington signed compacts to articulate the scope and regulation of Class III gaming (what is commonly known as Vegas-style gaming). In addition, as of 2021, 19 tribes have agreed to compact amendments governing sports betting. Under the terms of the compacts, tribes reimburse the Washington State Gambling Commission's costs of regulating Indian gaming (see Figure 8, on the following page). In 2019, payments by the survey respondents to Washington entities including the State Gambling Commission totaled \$31.8 million.

Gaming tribes agree under the compacts to contribute to communities and nonprofits. As a result of these agreements, tribes contribute to local fire, police, and other government bureaus that may bear the impact costs of casinos. Gaming tribes also support the in-state activities of nonprofit and charitable organizations such as Habitat for Humanity and the Wounded Warrior Project. Furthermore, tribes support responsible gaming through contributions to government, nonprofit, or charitable organizations providing education, awareness, or treatment of problem gambling, such as the Asian Counseling and Referral Service and the Evergreen Council on Problem Gambling. Finally, under compact agreements, tribes continue to help fund the smoking cessation activities of governments, nonprofits, and charities (Wegenast & Kam, 2019).

The combination of gambling regulatory reimbursement and community contributions ensures that gaming tribes do not

burden state and local governments with uncompensated costs. What's more, about half of the community contribution funds have been made to general-purpose charities—beyond gaming-related nonprofits. Additional in-kind contributions amplify this outreach by extending health (Port Gamble S'Klallam Health Center), fitness (Kalispel's Camas Center for Community Wellness), and other reservation community resources to non-Indians. In addition,

under Washington law (RCW 82.38.310) and by mutual agreement, 22 tribes in Washington have agreed to expend their share of motor fuel taxes collected on the reservation exclusively on planning, construction, and maintenance of roads, bridges, and boat ramps; transit services and facilities; transportation planning; public safety; or other highway-related purposes. (Licensing, 2020, p. 3).

In 2019, \$53.9 million in fuel tax collections was accrued by the respondent tribes for public transportation infrastructure projects in the state (Licensing, 2020, p. 4).

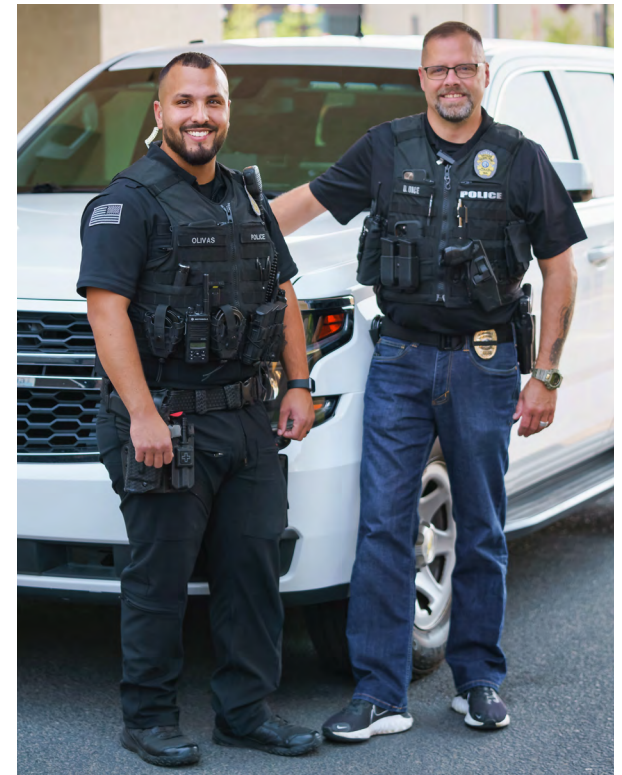
“Tribes are running business enterprises, not to maximize profits, but to benefit communities. Gaming opens the door to possibilities.”

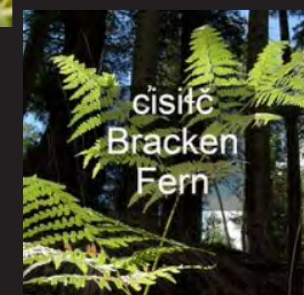
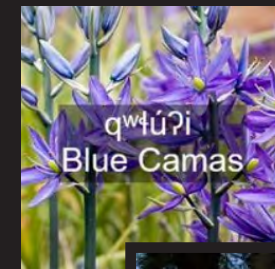
W. Ron Allen

Chairman of Jamestown S'Klallam Tribe

Under Washington law (RCW 43.06.450) and by tribal-state agreement, 27 tribes have cigarette tax compacts with Washington, the principal terms of which require tribal taxes commensurate with Washington's. In addition to the above mutual agreements and partnerships, tribes and local governments regularly work together to connect sewer lines, fund ambulance service, upgrade intersections, and bus children to school.

In sum, the Indian tribes of Washington are both economically large and beneficial to the non-Indian public interest. Tribes contribute via in-kind services, indirect tax collections, and millions in direct contributions to public charities and government agencies. These efforts go beyond just offsetting costs and improve Washington's quality of life.





► **Preserving Culture**

JAMESTOWN S'KLALLAM TRIBE TRADITIONAL FOODS AND CULTURE PROGRAM

The Jamestown S'Klallam Tribe's yəhúməc Traditional Foods and Culture program supports the continued harvesting and preparation of traditional foods and medicines while encouraging physical activity, social connection, and the Klallam language. Its village model has groups learning together, and elders and knowledge keepers teach tribal citizens and families through hands-on experiences.

FIGURE 8
Tribal Contributions Under the Gaming Compact
 Nominal dollars in millions

	2019*	2020*
COMMUNITY IMPACT (GOVERNMENT, FIRE, POLICE)	\$ 10.5	\$ 8.7
CHARITIES	\$ 13.1	\$ 10.1
SMOKING CESSATION & PREVENTION	\$ 2.5	\$ 1.9
PROBLEM GAMBLING	\$ 3.4	\$ 2.7
WASHINGTON STATE GAMBLING COMMISSION FEES	\$ 2.3	\$ 2.2
WASHINGTON SUBTOTAL	\$ 31.8	\$ 25.6
NATIONAL INDIAN GAMING COMMISSION FEES	\$ 0.8	\$ 0.9
TOTAL	\$ 32.6	\$ 26.5

* From survey respondent tribes

Washington Tribes and COVID-19

COVID-19 landed on Washington tribes' doorsteps shortly after arriving in the state. Indian communities were already contending with health disparities, making them more vulnerable to infectious diseases. Tribal governments also faced financial strains as their aggressive business closures decimated revenue.

Washington tribal governments flexed their governance capabilities by implementing reservation-wide public health mandates and following CDC protocols even before other governments. In case after case, tribes also deployed their public health capabilities in off-reservation communities.



Caring for Communities

Stabilizing Washington's Healthcare System

From the onset of the pandemic, tribal governments reduced strain on Washington's health system by attending to the needs of their on-reservation populations. Tribes distributed protective equipment and other medical supplies, established testing sites, and even created a field hospital.

Protecting Vulnerable Populations

Tribal governments took a variety of measures to protect their citizens from COVID-19's disproportionate and often devastating impact on Native American communities. Several Washington tribes responded with reservation closures to minimize the spread of the virus and protect the health, safety, and welfare of their communities. Throughout the pandemic, tribes also took precautions to protect elders and found creative ways to support youth.

Mitigating Economic Fallout

Tribes in Washington went to great lengths to alleviate the economic fallout of COVID-19 for their communities. Tribal governments and enterprises instituted public health mandates early and converted to work-from-home arrangements where possible, and tribal citizens and families received direct relief on many reservations. Some tribal enterprises maintained payroll for employees even if they were unable to work, and many tribes developed food delivery programs for at-risk community members.

Indian Needs Remain Acute

While off-reservation economies and non-Indian Washingtonians are important to tribes, their prime concern is addressing long-standing poverty among their people. This section demonstrates that even though there has been recent good economic news for tribes, the relative position of Indians is well below that of Washingtonians in general. And, while the federal and state governments are not making enough of a difference in this area, tribes are making a difference.

“It’s our moral obligation to take care of one another.”

Lawrence Solomon

Former Chair of Lummi Indian Business Council



Reservation socioeconomic status lags Washington’s

Despite the United States pledging in treaties and public policies to advance the prosperity of American Indians in exchange for vast territorial cessions, Indian socioeconomic status in the 21st century remains well below average. While on-reservation Indian income, unemployment, and college attainment have been improving over the last three decades, there is still a great deal of ground to cover relative to the status and trends of those indicators for all Washingtonians. In the latest data available, the incomes of American Indians living on Washington Indian reservations averaged less than half the statewide level, unemployment is more than three times higher, and college graduates are nearly four times scarcer (see Figure 9).

Gaps are significant in health and education too. The Indian Health Service reports that Indians nationwide have a life expectancy that is five-and-a-half years lower than the rest of the population (Joseph, Andy et al., 2019). COVID-19-related mortality nationwide was nearly two times higher among Indian people than non-Hispanic whites (Arrazola et al., 2020). The graduation rate among Indian students in 2018–19 stood at 74 percent, compared to 89 percent for white students (NCES, 2021).

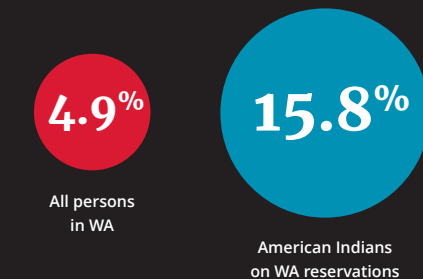
FIGURE 9

Indian Socioeconomic Status Lags

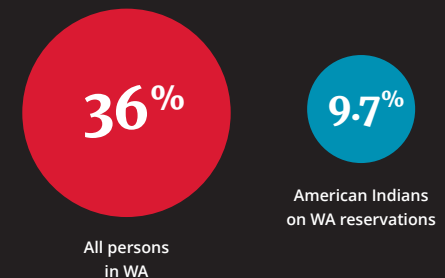
Income per person



Unemployment



College attainment



(U.S. Census, 2019)

Federal underfunding of Indian programs continues

Treaties between the United States and tribal governments and federal statutes articulate federal commitments to support Indian well-being. Yet, these commitments remain largely unfulfilled because Congress is persistently unwilling to appropriate sufficient funds. In the last quarter of the 20th century, federal funding on programs targeted to Indians and their governments lost ground in inflation-adjusted, per capita terms *and* relative to federal non-defense spending per American generally (Walke, 2000). Unfortunately, the 21st century is hardly an improvement. In 2021, the U.S. Office of Management and Budget estimates that annual budgets include approximately \$28 billion to \$29 billion in federal services to tribes across the nation. Tribes have estimated that the annual need is north of \$200 billion to address their communities' challenges.

The U.S. Commission on Civil Rights recently observed, the efforts undertaken by the federal government in the past 15 years have resulted in only minor improvements, at best, for the Native population. And, in some respects, the U.S. Government has backslid in its treatment of Native Americans (U.S. Commission on Civil Rights, 2018, pp. 3-4).



It further noted,

Federal funding for Native American programs across the government remains grossly inadequate to meet the most basic needs the federal government is obligated to provide. ... Since 2003, funding for Native American programs has mostly remained flat, and in the few cases where there have been increases, they have barely kept up with inflation or have actually resulted in decreased spending power. (U.S. Commission on Civil Rights, 2018, p. 4)

Relative healthcare spending displays the gap. As Figure 10 on the following page shows, per person Indian Health Service spending on direct healthcare was only a fraction of that spent by Medicare (31 percent), the Veterans Health Administration (38 percent), and Medicaid (50 percent) on their service populations in 2017.



Tribes add their own funding to support healthcare for their citizens, and many provide healthcare services to both Native and non-Native Washingtonians.

► Improving Lives

SQUAXIN ISLAND TRIBE'S CHILD DEVELOPMENT CENTER

In many respects, Washington is a leader in early learning, and the Squaxin Island Tribe's Child Development Center is no exception. The Center partners with the community and tribal elders to help support early childhood development for its Native and non-Native students. It also began participating in Washington's Outdoor Preschool Pilot Program in 2018, which has garnered an enthusiastic community response. Through outdoor play, the Center teaches Native knowledge and culture about the land and helps children gain more confidence.



► Preserving Culture

PUYALLUP TRIBE OF INDIANS: THE PUYALLUP TRIBE OF INDIANS' LANGUAGE PROGRAM

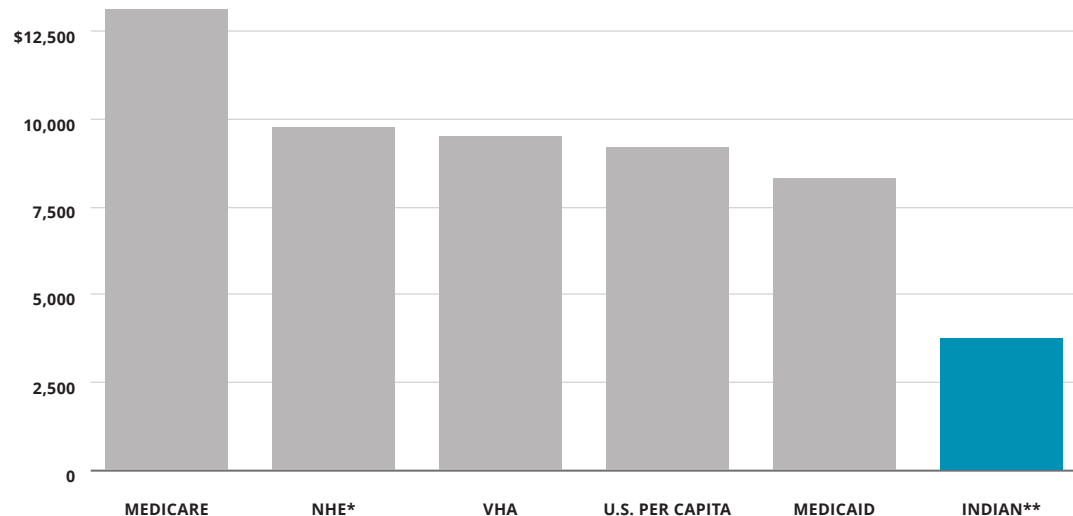
The Puyallup Tribe of Indians' Language Program cultivates Twulshootseed language usage in school—Twulshootseed is taught in the K-12 Chief Leschi School and at the University of Washington—at home, at work, and in social settings through engaging social media, creative marketing materials, and traditional storytelling. Cultural revitalization programs help inspire local and statewide systems to appreciate culturally relevant teaching and demonstrate its value for improving student outcomes. Native language programs help tribes create spaces that foster Native student success and equip the next generation with the knowledge and tools to continue their ways of life.



FIGURE 10

Indian Healthcare is Underfunded

dollars per capita



* Per-user benchmark based on national health expenditures (NHE) modeling.

** This Indian Health Service figure excludes public health expenditures such as for sanitation infrastructure. (Tores et al., 2020)

Tribes are stepping into the breach

American Indian and Alaska Native tribal governments step into the breach left by federal underfunding and virtually nonexistent state funding to deliver services on reservations. As the sidebars throughout this report indicate, Washington tribes routinely engage in varied, creative, and extensive efforts to improve their societies.

Tribes work to improve reservation economies, schools, environments, clinics, housing and infrastructure using their unextinguished powers of self-government.

Tribes add their own funding to support healthcare for their citizens, and many provide healthcare services to both Native and non-Native Washingtonians. Seven State-Tribal Education Compacts permit tribes to fully operate and substantially fund schools (Instruction, n.d.), often with significant effect. Chief Kitsap Academy, for example, has

raised high school graduation rates to par with the state average despite having twice the proportion of children eligible for free lunch (Public School Review, n.d.). Tribes such as Puyallup (Port of Tacoma, n.d.; Puyallup Tribe, 2005) and Jamestown S'Klallam (Tribe, n.d.; Tribe, 2020) make significant investments in watersheds to maintain and improve water quality for their communities.

Properly implemented Indian treaties might have prevented the socioeconomic gap from growing so sizable in the first place. Still, with self-determination and self-governance in full swing, tribes are making progress on many fronts—to the benefit of the state economy and federal and state taxpayers.

Tribes Strengthen Washington's Economy



Indian economic development helps poor regions of Washington

Because history (less than economics) has determined reservation locations relative to broader settlement patterns, Indian economic activity, especially casinos, can bring economic growth to areas that need it. Compared with the operation of market forces, which tends to distribute facilities near customers, if a tribe opens a relatively rare business on a reservation (such as a Vegas-style casino), it will attract customers from farther away than its less-rare competitors (that is, movie theaters and restaurants). In other words, Indian casinos routinely recruit more economic activity from farther away than they compete with nearby. Indeed, a literature of systematic evidence on the question links casino introductions with economic vitality (Akee et al., 2014; Baxandall & Sacerdote, 2005; Baxandall et al., 2005; Johnson, 1999; Martin et al., 2006; Rose, 1998; Taylor et al., 2000; Taylor, 2006).

Intertribal transfers boost rural economies

Under the terms of the tribal-state gaming compacts, each tribe in the state receives an equal allocation of video lottery terminals: 1,125 in 2020. If they choose, tribes may lease some or all of their allotment to other tribes in more favorable locations. Terminal Allocation Transfer Plans (TAPs) filed with the Washington State Gambling Commission and Washington Indian Gaming Commission indicate that in 2020, 10 tribes (most of them near urban markets) were net lessees—that is, they leased in more than they leased out. Conversely, 16 tribes (most of them in remote, rural regions with small markets) were net lessors—they leased out more than they leased in. (Three tribes did not partake of TAP agreements.)

In practical terms, the effect of intertribal allocations has been to permit tribes near urban markets to operate more than their number of allocated machines. In the process, they share a portion of the value those machines create with remote tribes in, for example, the far Olympic Peninsula, the Pacific Coast, Northern Puget Sound, and the state's interior. In some cases, such as the Hoh, Quileute, and Makah tribes on the Pacific side of the Olympic Peninsula, TAPs of their entire device allocations mean they benefit from gaming revenue without opening facilities. The geographic dispersal of casino value helps tribes leasing out devices by adding to tribal budgets. The local region benefits as well. As those tribes undertake government activity and spend dollars earned in the larger markets, they employ and purchase from the rural and remote economies around them.



▶ Protecting Resources

CONFEDERATED TRIBES OF THE YAKAMA NATION FOREST MANAGEMENT

The Yakama Nation, whose 1.4 million-acre reservation includes 650,000 acres of forest, collaborates with partners to fund and implement restoration projects and create a resilient forest ecosystem.



The Yakama Nation's forest management work includes prescribed burns and aquatic restoration.

Tribes are more fiscally independent

Before the disruptions of COVID-19, more than three-quarters of tribal budgets originated from tribal sovereignty (see Figure 11). Tribally owned businesses (including leasing out casino device rights), on-reservation tax collections (including tribes' fuel tax shares), land and other lease revenue, and natural resource royalties (like stumpage for standing timber) accounted for 78 percent of the survey-responding tribes' aggregate budgets. Compare that to the 1960s and 1970s, when tribes were predominantly—if not entirely—reliant on federal funding. In 2019, only one-fifth of aggregate tribal budgets were derived from grants and contracts.

As is generally the case nationwide, state contributions to tribal treasuries were minimal. The aggregate shares

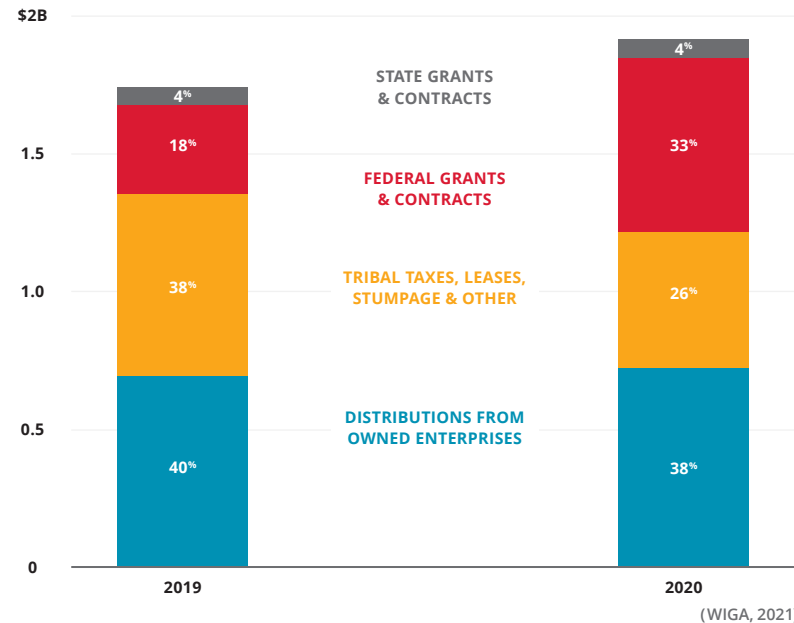
mask variation. Some remote, rural tribes may depend more heavily on intergovernmental transfers than their counterparts near urban centers. Nonetheless, the statewide totals paint a welcome picture.

Federal assistance grew substantially as a share of tribal budgets as a result of COVID-19 pandemic relief programs. As with many state and local governments, federal aid in 2020 helped prevent significant financial loss. The federal share of combined tribal budgets nearly doubled, more than making up for reductions in tax, lease, and resource revenue. It remains unclear how persistent this shift in federal funding will be. Still, the data in 2019 corresponds to that of 2017 and earlier, indicating that tribes were sustaining their fiscal independence before the pandemic (Taylor, 2019).

FIGURE 11

Most Tribal Funding Comes From Tribal Governments and Businesses

2019, 2020: Tribal Government Funding Sources



Conclusion

Tribes benefit all Washingtonians

American Indians were rooted in the land, sea, and rivers of what is now Washington long before national and state boundaries were drawn. Tribal governments will not come and go based on new incentives, any more than the government of Washington could move to Illinois. Tribal enterprise profits accrue to these permanent fixtures of the Washington economy (rather than to shareholders distributed across global capital markets).

One hundred percent of tribal net income translates into government efforts to build more vibrant households; ample housing; better schooling; healthier, safer communities; cleaner environments; and other public goods, services, and amenities.

As reservation economies grow from a position below prevailing conditions in Washington, they bring underutilized resources—especially people—into more productive participation in the state economy. Tribes do this without imposing fiscal burdens on the state to cover, for example, the cost of good gaming regulation or municipal road construction adjacent to reservations. And tribes rely heavily on the off-reservation economy for goods, services, and labor, meaning that reservation economic growth quickly registers in the larger economy and, accordingly, in the Washington treasury. Especially in remote rural locations, tribes can be substantial net contributors to regional growth. In addition, intertribal device leasing spreads the benefits of Indian casinos

to rural Washington. If tribes in Washington were collectively a private out-of-state business, Washington would be brainstorming incentives to attract it. Fortunately, these benefits accrue with no tax expenditures by the state legislature.



Appendices

About the author

Jonathan Taylor is an economist with expertise in natural resources, gaming, and American Indian development. He provides counsel to tribes and bands in the United States and Canada, including public policy analysis, strategic advice, and economic research. He has offered expert testimony in litigation and other public proceedings for many Native American groups.

Taylor is President of the Taylor Policy Group, an economics and public policy consultancy, a Research Affiliate at the Harvard Project on American Indian Economic Development at the Kennedy School of Government, and a Senior Policy Associate at the Native Nations Institute, Udall Center for Studies in Public Policy, University of Arizona, Tucson. He holds a Master of Public Policy from Harvard University (1992) and a Bachelor of Arts in Politics from Princeton University (1986). A current CV is available at taylorpolicy.com. The opinions herein are his own and not those of the institutions with which he is affiliated.

Conservatism in modeling and reporting impacts

Several modeling approaches improve the precision of the impact estimates and introduce conservatism. Tribal enterprise impacts were modeled to reflect their government-owned nature; top-line enterprise revenue (demand) was used with a modeling assumption to zero out proprietor income. In contrast to run-of-the-mill IMPLAN studies, this approach eliminates the risk of overstating proprietor income (a component of value-added) when modeling a government-owned enterprise with its government. Taxes on production and imports (TOPI) were set to zero in recognition that tribal governments and the commercial enterprises of tribal governments are not themselves subject to taxation. TOPI arises from the indirect and the induced impacts. Note, TOPI does not include all taxes paid by industry. For example, social insurance taxes are a part of employee compensation, and profits taxes are part of other property income.

Tribal government was modeled using a local government institutional spending pattern. In both government-owned enterprise and administrative government modeling, tribal survey responses about total employee compensation (i.e., inclusive of employer contributions to social insurance and benefits) were introduced to calibrate the model to actual operations. When modeling capital expenditures that entailed real estate transactions, the purchase price was not the basis of demand change (since most of its value represents a wealth transfer that does not affect the demand for goods and services in the economy). Instead, an estimate of transaction costs (6 percent of value) was imputed to the legal, real estate, and banking sectors. Debt payments were not modeled, per the recommendation of IMPLAN.

Care in reporting accompanies the above conservatism in modeling. Many impact studies report *output* numbers instead of *value-added*, but output double-counts (and worse). For example, the original value of iron that becomes ore at a mine, steel at a smelter, stamped sheet metal at a mill, a radio housing at an electronics firm, a car stereo at an auto plant, and a car sale at a dealership would be counted six times over in output.

Yes, each firm received revenue to cover the costs of its inputs—in turn, the revenues of its input suppliers—but the economy is not as large as all those firms' revenues. Because it is not appropriate to count the iron ore six times, economists measure gross regional, state, or national product—the sum of all value added—to track growth and recession—not the measure of all firms' revenues (output). Not only is value-added unexaggerated by double-counting, but it also does not vary with vertical integration or segmentation. By contrast, output would shrink in the iron ore example above if the smelter and sheet metal firms merged, despite the economy *not* shrinking by such a merger.

Additional information

The Washington Indian Gaming Association (WIGA) funded this study under a contract with the Taylor Policy Group, Inc. The views expressed in this document are those of the author and do not necessarily reflect those of the institutions with which he is affiliated. Unless otherwise indicated, WIGA or its member tribes provided the material herein. The titles of tribal leaders are contemporary to the time of publication: 2022. WIGA provided the photographs not otherwise credited.

This work is licensed under the Creative Commons Attribution 4.0 International License. To view a copy of this license, visit <http://creativecommons.org/licenses/by/4.0/> or send a letter to Creative Commons, P.O. Box 1866, Mountain View, CA 94042.

References

- Akee, R. K. Q., Spilde, K. A., & Taylor, J. B. (2014). Social and economic changes on American Indian reservations in California: An examination of twenty years of tribal government gaming. *UNLV Gaming Research & Review Journal*, 18(2), 3. <http://bit.ly/2PdZ63w>
- Arrazola, J., Masiello, M. M., Joshi, S., Dominguez, A. E., Poel, A., Wilkie, C. M., Bressler, J. M., McLaughlin, J., Kraszewski, J., & Komatsu, K. K. (2020). COVID-19 mortality among American Indian and Alaska native persons—14 states, January–June 2020. *Morbidity and Mortality Weekly Report*, 69(49), 1853. <https://doi.org/10.1017/S0950268815001211>
- Baxandall, P., O'Brien, P., & Sacerdote, B. (2005). The casino gamble in Massachusetts: Full report and appendices. <http://bit.ly/2vXcBKO>
- Baxandall, P., & Sacerdote, B. (2005). Betting on the future: The economic impact of legalized gambling. *Rappaport Institute for Greater Boston Policy Briefs*, 1-8. http://www.hks.harvard.edu/content/download/68603/1247222/version/1/file/betting_final.pdf
- Berry, A. (2009). Two Forests Under the Big Sky: Tribal v. Federal Management. *PERC Policy Series*, 45). <https://www.perc.org/wp-content/uploads/old/ps45.pdf>
- BIA. (2021). Indian Entities Recognized by and Eligible to Receive Services From the United States Bureau of Indian Affairs. *Federal Register*, 86(18), 7554-7558.
- Bill, C. A. (2021). 2021 Centennial Accord Agency Highlights. <https://bit.ly/3CFB3QQ>
- Casino City. (2021). Gaming Directory. <http://www.gamingdirectory.com/>
- Champagne, D., & Goldberg, C. E. (2012). *Captured Justice: Native Nations and Public Law 280*. Carolina Academic Press.
- Chandler, M. J., & Lalonde, C. (1998). Cultural Continuity as a Hedge against Suicide in Canada's First Nations. *Transcultural Psychiatry*, 35(2), 191-219. <https://doi.org/10.1177/136346159803500202>
- Croman, K. S., & Taylor, J. B. (2016). Why beggar thy Indian neighbor? The case for tribal primacy in taxation in Indian Country. http://nni.arizona.edu/application/files/9014/6247/3804/Croman_-_Taylor_Double_Taxation_JOPNA_2016-05-04_web.pdf
- Dixon, M., Shelton, B. L., Roubideaux, Y., Mather, D., & Smith, C. M. (1998). Tribal Perspectives on Indian Self-Determination and Self-Governance in Health Care Management. *National Indian Health Board*.
- Fletcher, M. L. M. (2004). In Pursuit of Tribal Economic Development as a Substitute for Reservation Tax Revenue. *North Dakota Law Review*, 80, 759-807.
- Henson, E. C., Jorgensen, M. R., Kalt, J. P., & Leonaitis, I. G. (2021). Assessing the U.S. Treasury Department's Allocations of Funding for Tribal Governments under the American Rescue Plan Act of 2021. https://ash.harvard.edu/files/ash/files/covid19_response_and_recovery_policy_brief_-_11.3.21.pdf?m=1635951416
- IMPLAN. (2021). IMPLAN 2021. <http://www.implan.com/>
- Tribe, J. S. ((n.d.)). Habitat Restoration & Enhancement. <https://bit.ly/3sftAGp>
- Tribe, J. S. (2020). Environmental Planning. <https://jamestowntribe.org/natural-resources/environmental-planning/environmental-planning/>
- Johnson, R. (1999). Chapter 5. Impacts of casino proximity on social and economic outcomes, 1980-1997: a multilevel time-series analysis. In D. Gerstein, R. Volberg, H. Harwood, & E. M. Christiansen (Vol. 5, pp. 65-72).
- Joseph, J., Andy, Pratt, B., & Joseph, V. (2019). The National Tribal Budget Formulation Workgroup's Recommendations on the Indian Health Service Fiscal Year 2021 Budget: Ending the Health Crisis in Indian Country: A Path to Fulfill the Trust and Treaty Obligations. <https://bit.ly/3CgnY03>
- Kalt, J. P. (1996). Testimony of Professor Joseph P. Kalt. United States Senate Committee on Indian Affairs. <http://hpaied.org/sites/default/files/publications/senatfnl.pdf>
- Krepps, M. B., & Caves, R. E. (1994). Bureaucrats and Indians: Principal-agent relations and efficient management of tribal forest resources. *Journal of Economic Behavior and Organization*, 24(2), 133-151.
- Martin, J., Contreras, K. S., Deolalikar, A., Gelles, P., González-Rivera, G., Johnson, M., & Marks, M. (2006). An impact analysis of tribal government gaming in California. Center for California Native Nations, University of California, Riverside.
- NCES. (2021). Chapter 2: Public High School Graduation Rates. In *Preprimary, Elementary, and Secondary Education*. National Center for Education Statistics.
- Port of Tacoma. (n.d.). Lower Wapato Creek Habitat Project. <https://bit.ly/33ujpic>
- Public School Review. (n.d.). Chief Kitsap Academy (2021-22 Ranking) Poulsbo, WA. <https://bit.ly/32aNfg5>
- Puget Sound Business Journal. (2021). List of the Largest Employers in Washington State [Data set].
- Puyallup Tribe. (2005). Puyallup Tribe Diagnoses Watershed's Health - Northwest Treaty Tribes. <https://bit.ly/3pelbQR>
- Rose, A. (1998). The regional economic impacts of casino gambling: Assessment of the literature and establishment of a research agenda. Adam Rose and Associates.
- Taylor, J. B. (2006). Indian self-government in Washington, Vol. II, The character and effects of the Indian economy in Washington State. Taylor Policy Group, Inc. and Washington Indian Gaming Association.
- Taylor, J. B. (2019). The Economic & Community Benefits of Tribes in Washington. Washington Indian Gaming Association & Taylor Policy Group, Inc. <https://bit.ly/2wp9n6C>
- Taylor, J. B., Grant II, K. W., Jorgensen, M. R., & Krepps, M. B. (1999). Indian Gaming in Arizona: Social and Economic Impacts on The State of Arizona., 1-56.
- Taylor, J. B., Krepps, M. B., & Wang, P. (2000). The national evidence on the socioeconomic impacts of American Indian gaming on non-Indian communities. Harvard Project on American Indian Economic Development.
- Tores, A., Joseph, V., & Abrahamson, G. (2020). Reclaiming Tribal Health: A National Budget Plan to Rise Above Failed Policies and Fulfill Trust Obligations to Tribal Nations: The National Tribal Budget Formulation Workgroup's Recommendations on the Indian Health Service Fiscal Year 2022 Budget. <https://bit.ly/329yPNb>
- U.S. Census. (2018). 2017 Census of Governments. <https://bit.ly/3pKqbOU>
- U.S. Census. (2019). American Community Survey. <http://bit.ly/2vXoXmi>
- U.S. Commission on Civil Rights. (2018). Broken Promises: Continuing Federal Funding Shortfall for Native Americans. <http://bit.ly/30ccSam>
- Wakeling, S., Jorgensen, M. R., Michaelson, S., Begay, M. A., Hartmann, F. X., & Kalt, J. P. (2000). Policing on American Indian Reservations: A Report to the National Institute of Justice. Malcolm Weiner Center for Social Policy, Harvard Kennedy School.
- Walke, R. (2000). Indian-related federal spending trends FY. 1975–2001 U.S. Congressional Research Service memorandum March 1, 2000. In Report of the Committee on the Budget, United States Senate to Accompany S. Con. Res. 101 Together with Additional and Minority Views, Senate Report 106-251 (pp. 199-250). Congressional Research Service, Library of Congress.
- Management, W. O. O. F. (2021). Number of Employees and Headcount Trends. <https://bit.ly/3mfKMYK>
- Instruction, W. O. O. S. P. ((n.d.)). State-Tribal Education Compact Schools (STECs). <https://bit.ly/3F8zg8Y>
- Licensing, W. S. D. O. (2020). Tribal Fuel Tax Agreement Report. <https://bit.ly/3l2KS58>
- Wegenast, D., & Kam, K. (2019). Tribal Community Contributions. <https://bit.ly/3chKl92>
- WIGA. (2021). Survey of Washington Indian Tribes [Data set]. Washington Indian Gaming Association.

